



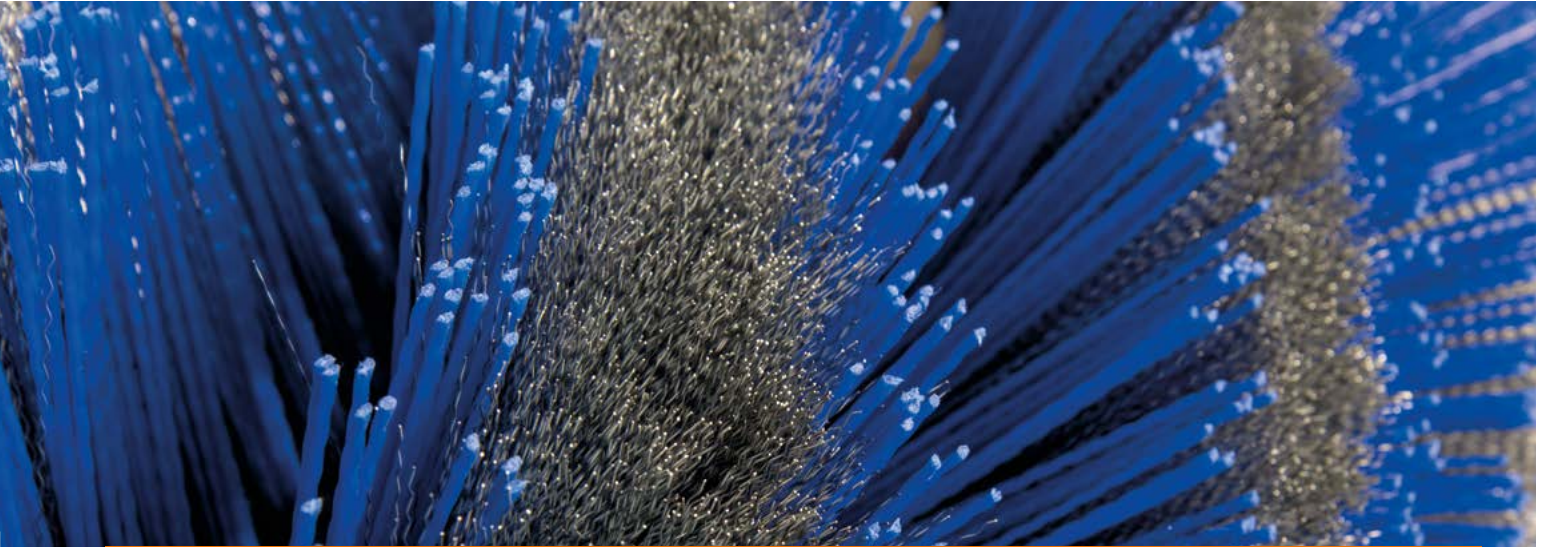
Weed brushes



Drilling. Filling. Pinning.

Since we rely on vertical integration, we continuously invest in our production facilities. One example is our brush body production machine.

From filling and pinning machines for sweeping rollers and circular brushes to equipment for the manufacture of brush rings and our own mechanical engineering department, we are able to ensure a constantly high level of production quality.



“Any machine is only as good as the brush it uses”

Would you use a wood drill to drill a hole in a concrete wall? That,s the point! If you use the wrong tool, even the best machine will not produce any good results. And the same is true for brushes – there is never one brush covering all applications.

Weber brushes are as individual as the requirements in everyday life. To achieve optimum cleaning and sweeping performance, we carefully adapt the selection, the combination, and the finishing of materials to each machine and each application.

Appropriate tools for any type of surface

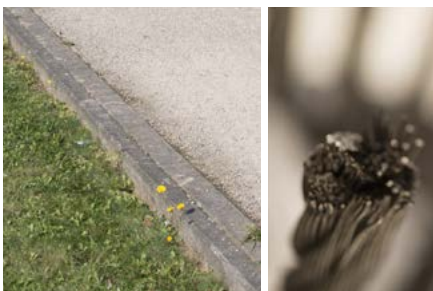
Milling debris/construction sites



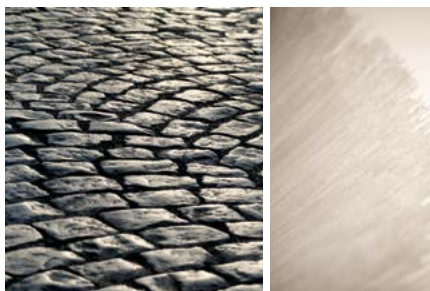
Runway/airports



Weed/pavement



Historical stones



Curb-stones





Mechanical weed removal

Product film



We focus on mechanics instead of chemistry. Brushes have long been accepted for herbicide-free weed removal.

Weber offers a broad range of weed brushes for almost all sweepers and weed removal devices as well as accessories for string trimmers.



Expensive growth of weeds

Rampant green on roads, pavements, and plazas does not only disturb the visual impression. The maintenance and repair of paved surfaces or the cleaning

of clogged road drains generates costs that burden public budgets.

Problem: **Aesthetics**



Problem: **Clogged drains**



Problem: **Damages**



Effective and eco-friendly

Compared to chemical or thermal technologies (e.g. foam, hot water, steam, infrared, burner), mechanical weed removal is more effective, economical and sus-

tainable. **Pulling and sweeping in one go** removes weed in a single process and preserves microorganisms.



Features

- > Economical
- > Efficient
- > Fast
- > Eco-friendly

Weed brush “Light”



Features

- > Flat wire clusters arranged in opposite sweeping direction
- > Ideal to cut weed on paved areas

Weed brush PlugLock® 14-FL

Features

- > Individual flat wires are reinforced by means of flat wire clusters
- > Mixture combines benefits of weed and standard brushes



Weed brush PlugLock® 14



Features

- > The hardest weed fighting tool
- > For machines < 5 m³
- > Bristles complete of flat wire, Ø 14 mm
- > Simultaneous cutting and sweeping effect by random bristle arrangement

Weed brush PlugLock® 22-FL

Features

- > For large sweepers > 5 m³
- > Flat wire with embedded steel ropes
- > 6 to 8 steel ropes per row
- > Ideal for weed removal or milled material in road construction applications



Weed brush PlugLock® 22

Features

- > For large sweepers
- > Complete with steel ropes
- > Special feature: requires specially prepared sweeping device
- > Attachment has to be aligned with brush





Attachment systems

Thanks to variable and individually combinable bristles, Weber weed brushes can quickly and easily be adapted to the relevant applications.

SideLock®

Features

- > The tufts are screwed on the side
- > Mounting plates from 300 to 900 mm

Tufts for SideLock®

1. The classic using steel rope bristles. The steel rope “twirls” – the effective sphere of the bristle grows and the weed is torn out due to the special pulling effect.
2. Spring flat wire 2.9 mm, particularly aggressive
3. **RUBCUT BASIC**, steel rope with standard coating
4. **RUBCUT PRO**, steel rope with compressed coating
5. For gentle weed removal on historic cobblestones
6. **WIKRALON®** for sensitive surfaces





The **TopLock**® or **SideLock**® mounting plates and replacement tufts are available for all common manufacturers and models.

TopLock®

Features

- > The tuft head is screwed to the pad-holder
- > Mounting plates from 400 to 500 mm

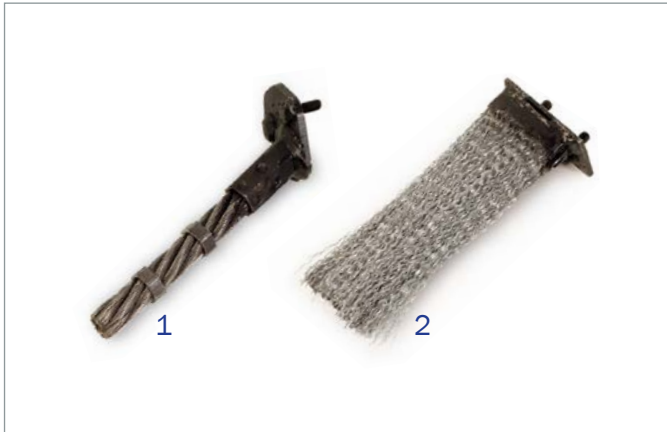


Tufts for TopLock®

1. The classic using steel rope bristles. The steel rope “twirls” – the effective sphere of the bristle grows and the weed is torn out due to the special pulling effect.
2. Spring flat wire 2.9 mm, particularly aggressive
3. **RUBCUT BASIC**, steel rope with standard coating
4. **RUBCUT PRO**, steel rope with compressed coating
5. For gentle weed removal on historic cobblestones
6. **WIKRALON**® for sensitive surfaces



Replacement tufts for all common weed removal systems



Weed tuft overview

1. Weed tuft special shape, wire rope 16 mm
2. Weed tuft special shape, crimped wire
3. PlugLock® for PE plate, flat wire 2.9 mm
4. SideLock® for spout plates, wire rope 22 mm
5. Weed tuft round socket, wire rope 16 mm
6. Weed tuft round socket, wire rope 16 mm
7. Weed tuft AS-Motor, wire rope 16 mm twirled
8. Weed tuft square socket, wire rope 16 mm
9. WIKRALON® tuft for trimmer brush head
10. Weed tuft square socket, RUBCUT PRO 22 mm
11. PlugLock® for PE plate, wire rope
12. SideLock® for spout plates, wire rope
13. Weed tuft type GMR, flat wire 2.9 mm
14. Weed tuft type GMR, wire rope 22 mm
15. SideLock® for spout plates, RUBCUT PRO 22 mm
16. Weld-on tuft for segments, wire rope
17. Weed segment for mounting plate, RUBCUT PRO 22 mm, system “weed flower”



From a single source: The complete product range

Please don't hesitate to contact us in case of questions.
We will be glad to provide the required information!

- ++ = excellent suitability
- + = good suitability
- = unsuited
- * = requires reinforced sweeping device (by manufacturer)

Weed brushes		 Small compact class	 Large compact class	 Big sweeper	 Front-mounted sweeper	 Multifunction arm
Weed brush "Light"		+	+	+	+	-
Weed brush PlugLock® 14-FL		+	+	+	+	+
Weed brush PlugLock® 14		+	+	+	+	+
Weed brush PlugLock® 22-FL		-	+	++	+	+
Weed brush PlugLock® 22		-	+	++	-	++
Attachm. system SideLock®		-	*	*	-	++
Attachm. system TopLock®		-	*	*	-	++

Weber Brush Systems GmbH

Administration, sales, development, production and customer service

Kleinmühle an der B8

65520 Bad Camberg

T +49 (0) 6434 91 25 - 0

F +49 (0) 6434 91 25 - 42

Schmölln office

Sales and production

Am Jägerfließ 4

04626 Schmölln-Nitzschka

T +49 (0) 34491 635 - 93

F +49 (0) 34491 635 - 94

